

Central Chilterns HLF Landscape Partnership Scheme -

Chalk, Cherries and Chairs

Scheme Summary

Background Information:

It is envisaged that the Central Chilterns Landscape Partnership Scheme (LPS) will deliver outcomes across an area of around 250 km² of the Central Chilterns through a 5 year scheme, total value around £2.5m. The scheme will comprise 6 programmes, with over 20 interrelated projects designed and delivered by multiple delivery partners. Together these projects will address the scheme aims, bringing long-term and sustainable benefits to the area. The Chilterns Conservation Board will be the lead applicant and accountable body.

Sceme Aims:

1. To restore, enhance and record wildlife habitats, landscape features and cultural heritage of the Central Chilterns.
2. To encourage people to investigate and celebrate the natural and cultural heritage of the Chilterns, so that a wider range of people are inspired to care about it and are equipped to protect it in the future.
3. To strengthen the capacity of local communities to care for, protect and enhance local landscapes and wildlife habitats.

Theme A: WILDLIFE, HERITAGE AND LANDSCAPE

Programme 1: Connecting, restoring and enhancing wildlife habitats

This programme will deliver landscape-scale conservation activity which contributes to achieving the Lawton Review aims of “more, bigger, better and more joined up” spaces for wildlife.

Increased ecological connectivity and resilience in the face of climate change and housing and infrastructure development has been identified as a priority. Projects will be developed with farmers, woodland owners and other land owners / managers, environmental NGOs, local interest groups, communities and volunteers to improve habitat management; link and buffer existing wildlife habitat and create wildlife rich corridors and stepping stones; and to develop approaches to positively manage / adapt to landscape change.

Core delivery areas for this programme will be Biodiversity Opportunity Areas (see map attached) and also those areas where habitats are at the greatest threat of being fragmented or degraded for example along the HS2 corridor and in areas of housing growth e.g. Princes Risborough.

Programme 2: Conserving and recording landscape features

This programme will focus on identifying, recording and conserving characteristic landscape features with particular focus on hedgerows and boundary features, traditional orchards, historic routes and trackways, ancient woodlands, veteran trees, relict wood pasture. It will focus in particular on landscape features and heritage at risk, particularly those in urban fringe areas or threatened by housing and infrastructure development and climate change.

Theme B: PEOPLE AND LANDSCAPE

There will be 2 programmes addressing this theme, both of which contribute to inspiring a wider range people to learn about, understand, enjoy and care about the distinctive landscapes, wildlife and cultural heritage of the area.

Programme 3: People and landscape – investigating and celebrating the past

This programme will achieve increased engagement through projects to investigate, explore and celebrate the relationship between people and this landscape over the centuries, looking at how the area's natural resources have supported communities and local industries and how in the process, people have helped to shape the landscape.

This programme will be delivered through a range of workshops, community investigations and interactive initiatives including oral histories and face-to-face interpretation.

Programme 4: People and landscape - inspiring new connections

This programme will explore ways to help people relate to the landscape today and break down barriers that currently prevent people from engaging with the countryside. Activity in this strand will be particularly (but not exclusively) targeted at the more urban, ethnically and culturally diverse centres of population This will involve a wide community partnership approach engaging new groups and individuals and working with a range of statutory partners such as local authorities, emergency services, Public Health and community based organisations. The programme will bring benefits to local communities and individuals in terms of health and well-being, skills, confidence and knowledge, as well as directly and indirectly benefiting the heritage of the area.

Projects will be developed around the themes of food, wood products, citizen science and natural environment and health.

Skills training / traineeships will support delivery of the projects in all programmes, and in the process will help people become more employable in the longer term. Heritage and land management skills developed by people participating in the project will enable them to continue to care for and manage the landscape beyond the end of the project. Other skills which could be transferred include social media for small businesses, marketing and PR.

Theme C: COMMUNITY AND LANDSCAPE

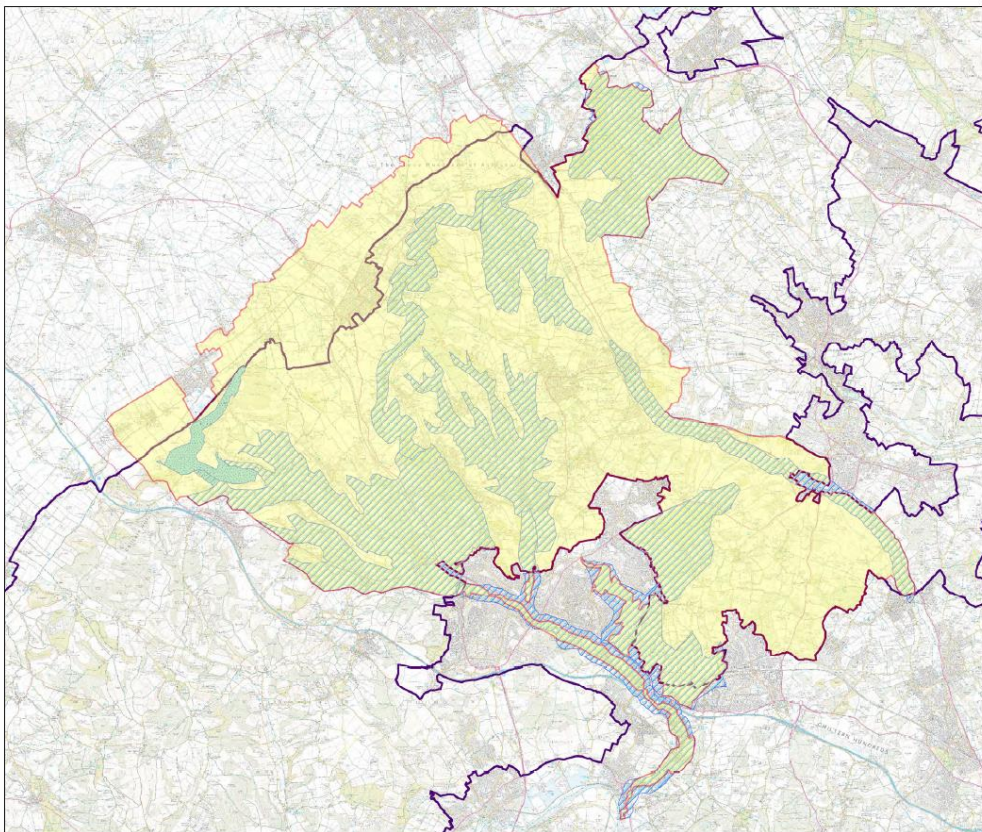
Programme 5: Our changing Chilterns - planning for the future

This programme will build the capacity and confidence of local communities to care for, protect and enhance the special places and landscapes of their local area whilst contributing to a more sustainable future. The programme will work with local communities, special interest groups and town and parish councils to raise awareness of the drivers for change in the landscape. It will engage them in helping to shape the future of their local environment.

Activity will include mentoring and training; neighbourhood planning toolkits; creation and development of local community 'friends of' groups, and establishment of a 'Chilterns Champions' scheme of local volunteers who actively care for and protect local heritage and encourage others to get involved.

Programme 6: Community assets - community spaces

The programme will support the creation of new community spaces including community orchards and woods where people can form a deeper connection with the landscape, for example through use of Community Land Trusts. The programme will also identify ways of supporting existing shared community assets such as village halls and locally managed green space. The use of local products for community benefit will be encouraged e.g. wood fuel from community woods to heat village halls.



- Central Chilterns(3)
- BOAs**
- NAME**
- Central Chilterns Chalk Rivers
- Chiltern Escarpment
- Chilterns Escarpment North
- Dunsmore woods
- Gomm Valley
- Radnage Valley
- Upper Hughenden valley
- Wendover Woodlands
- CTA
- Chiltern AONB Boundary

Central Chilterns - Landscape Partnership area

© Crown copyright and database rights 2016 Ordnance Survey
Licence no. 100044050